

Your pledge 25...



...helping to raise £25,000 for  
Autism Early Support!



Autism Early Support®



Autism Early Support®

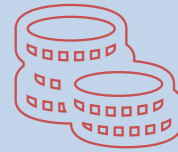
## Join our 25<sup>th</sup> Anniversary celebrations by pledging to turn £25 into something BIG ...

The Pledge 25 Challenge invites teams & individuals to raise funds that will make a real difference.

**Here's the deal:** we'll give you or your team £25 and you pledge to grow it as much as you can by the end of December.

*Can you think big, get creative, and take on the challenge?*

**Our promise to you:** by supporting our work, you will be helping to make a lasting difference to the lives of young autistic children and their families both today and for the next ¼ century!

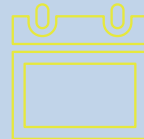


We give you

£25



you grow it as  
much as you can



before

31<sup>st</sup> December

Thank you to our Pledge25  
sponsor:



**CS CLEANING**  
Commercial Solutions

To join the challenge, please email Coral:  
[CoralRushmer@AutismEarlySupport.org.uk](mailto:CoralRushmer@AutismEarlySupport.org.uk)

## Here's some ideas for growing your £25, or choose whatever works best for you!

### **Raffles, cake sales and office games...**

Use your £25 to buy a few small prizes and add in some money-can't-buy treasures - like the best parking spot in the office, an extra day-off, or the chance to name a meeting room for a year! Add in some dress-down days, cake sales and swear jars and the ££'s will soon stack up.

### **Car Wash – best for a one-hit wonder & a big car parks**

Spend the £25 on sponges, buckets, soap and some marketing, and set up a car wash in your office car park.

Charge min £10 per car and wash and host a few car wash days at work or at your local football team.

### **Quiz Night – best for colleagues, friends and family**

Put your £25 towards snacks, and a small prize, and host a quiz night.

Charge an entry fee per team and offer bonus rounds for donations. With tickets at £10 pp, you only need a few teams and a good raffle to reach your target.

### **Staff Tournaments – best for team bonding**

Invest the £25 in basic supplies (balls, score sheets, snacks) and host a fun tournament, like football, ping pong, padel or even video games.

Charge an entry fee per player or team and invite spectators to donate. Add in some refreshments or a mini raffle to boost funds and entertainment value.

### **Enter a local Sports Challenge – best for active teams**

Use the £25 towards entry fees or bibs for a local event like the MK Half Marathon. Then rally sponsorship from colleagues, friends, and family, it won't take long to hit £2,500, especially if you can draw down company match funding.

### **Host a Class – best for those with a special skill**

Use the £25 for materials or marketing, then share your team's skills like cookery, yoga, photography, or even coding.

Charge a fee per participant and run multiple sessions. You'll soon hit your goal while giving people a great experience.

## Your support will help children like Cooper & his mum, Tess

### "I feel like I can be a mum again now"

Mum, Tess, told us she has tears of happiness when she thinks about how her son Cooper, age 5, is getting on, a year on from leaving the Circle Centre nursery.

"When he was little, we never described him as happy. Now, he's such a happy, bright child, and it's because of the start to his education that the Circle Centre gave him. They put the right tools in place to make him feel regulated, happy and loved, to let him be who he needs to be. My approach to parenting has come from what the Circle Centre do."

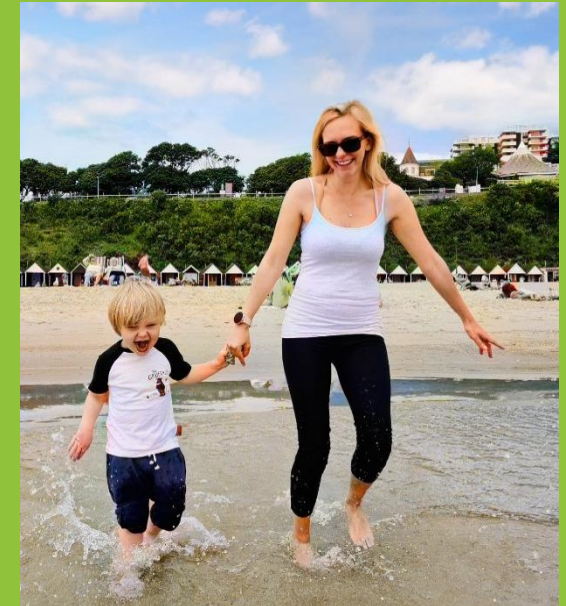
Before Cooper started going to the Circle Centre at 2 years old, he was terrified of people and didn't speak.

"We started to learn that there are so many ways to communicate, and we stopped focusing on speech. We started implementing things from nursery at home, and his regulation got better, his meltdowns were less. Every day was a little bit better, and everything became more manageable at home.

"Then he said his first word – whale! The Circle Centre had encouraged us to go with his interests, so we made everything whale-themed. He started saying a few more words, and then he increased to loads more words.

"All of a sudden, his fear started to fade, he wasn't scared of people and he started to form friendships. He went from being really isolated, to wanting other people in his world. Today, he's in a classroom filled with children. He says hello to them, and actually wants to be with them. I never thought I'd see that.

"I have hope for the future now, where I hope he can get his GCSE's. And a future where I won't have to care for him as an adult, where he can become independent and look after himself. I wouldn't have that hope right now without the Circle Centre."



## Since we started out 25 years ago in our founder's home in Winslow, we have met and supported thousands of local children and families...

As we reflect on our journey, we recognise today as being one of the most complex and uncertain landscapes in our history.

Yet our commitment to providing every child the lifeline of timely, early help and the highest-quality education remains unchanged.

To achieve this, we need your continued support as we build sustainable income for the future. Your partnership will give us the time and stability to plan with confidence.

**With your help, we can make sure every child has access to the education they need and deserve.**

# Thank you for your support

